



APPENDIX: Covid-19

Due to the Covid-19 global pandemic, severe adaptations have been made to the learning environment at Dilkes Academy, in line with the Government's guidance. As a result of this, the following measures have been planned for and will need to be strictly adhered to by staff and children. These safety measures have been shared with parents and staff prior to the phased re-opening.

- A refreshed risk assessment has been written and health and safety advice for children, young people and staff in light of recent government advice, is displayed on posters around the school.
- Small class groups, of no more than 15 children, have been organised.
- Classrooms have been organised, maintaining space between seats and desks where possible.
- A refreshed daily timetable has been established ensuring that outside space is used to best effect and that there is limited movement around the school or building
- There will be no school assemblies
- Staggered break times have been timetabled so that all children are not moving around the school at the same time
- Staggered drop-off and collection times have been organised to minimise adult to adult contact; children who are late will be required to go home
- Organised groups of children will remain together, with the same adult, throughout the day and for the remainder of the term.
- Play equipment has been removed from classrooms
- Unnecessary items have been removed from classrooms
- Soft furnishings, soft toys and toys that are hard to clean (such as those with intricate parts) have been removed from classrooms
- Children and young people who arrive at the education or childcare setting via public transport are encouraged to arrive earlier to limit contact with others
- Frequently touched surfaces and toilets will be deep cleaned with a bleach-based substance twice daily (between and after sessions)

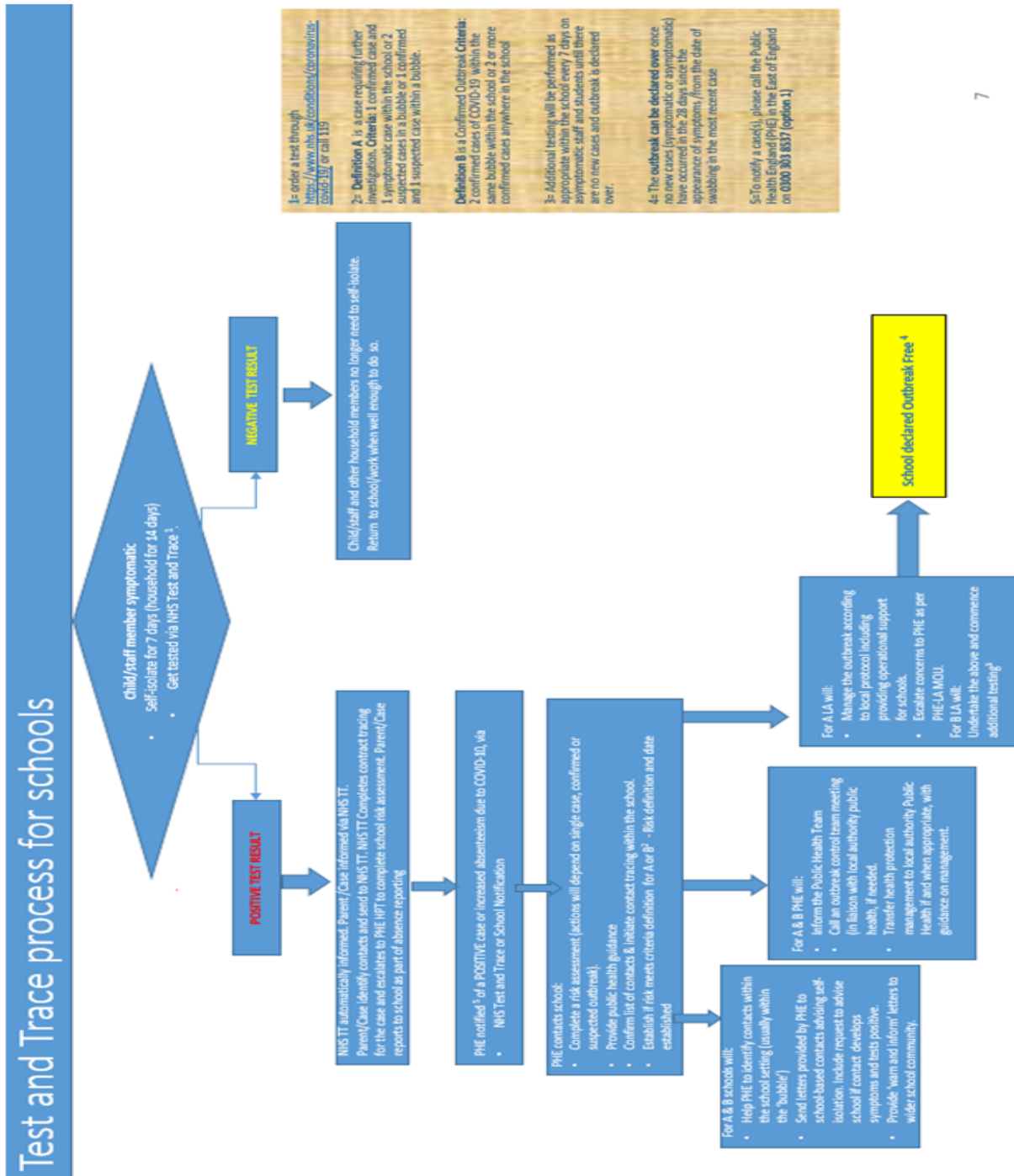
Staff will make children aware and frequently remind children of the social distancing measures put in place, including:

- Children and staff to remain two meters apart where possible.
- Children to wash hands upon entry and at regular intervals throughout their sessions.
- Children to remain in their allocated seat at their table for the duration of the session, unless asked otherwise.
- Children to use the resources provided on their tables. No sharing of resources with their peers.
- Water bottles need to be bought in from home and kept on the child's table. These cannot be shared.
- When moving around the school, eg to go to the toilet or for play breaks, children are to adhere to the markings on the floor and strictly follow guidance from teachers.
- When moving from the building to the outdoor areas, children to leave a 2m gap between themselves and their peers and adult/s.
- Children are to immediately return to their allocated classroom or learning space after going to the toilet and washing their hands.
- Children to stay within the designated zones when outside during break times.

Staff to remind children of good hygiene, including:

- Cleaning hands more often than usual - wash hands thoroughly for 20 seconds with running water and soap and dry them thoroughly or use alcohol hand rub or sanitiser ensuring that all parts of the hands are covered
- Ensuring good respiratory hygiene by promoting the ‘catch it, bin it, kill it’ approach

School to follow procedures as set out below for suspected and confirmed cases



1- order a test through <https://www.nhs.uk/conditions/coronavirus-covid-19/> or call 119

2- Definition A is a case requiring further investigation. Criteria: 1 confirmed case and 1 symptomatic case within the school or 2 suspected cases in a bubble or 1 confirmed and 1 suspected case within a bubble.

Definition B is a Confirmed Outbreak Criteria: 2 confirmed cases of COVID-19 within the same bubble within the school or 2 or more confirmed cases anywhere in the school

3- Additional testing will be performed as appropriate within the school every 7 days on asymptomatic staff and students until there are no new cases and outbreak is declared over.

4- The outbreak can be declared over once no new cases (symptomatic or asymptomatic) have occurred in the 28 days since the appearance of symptoms from the date of swabbing in the most recent case

5- To notify a case(s), please call the Public Health England (PHE) in the East of England on 0300 303 8337 (option 1)